



# WestSide S

[Home](#) [News](#) [Classifieds](#) [Community](#) [Sports](#) [Events](#) [Opinion](#) [Boating](#)

 [homes](#)  [cars](#)  [jobs](#)

## Westside News

Wednesday, December 05, 2007

[Advanced Search](#)



# Camden County adopts road impact fees

By Joyce L. Miller/Lake Sun Publications  
Published: Monday, December 3, 2007 1:16 PM CST  
[E-mail this story](#) | [Print this page](#)

Name or

Camden

CAMDEN COUNTY — Commissioners have signed off on a new regulation that implements impact fees for roads.

The new fee system will replace a road bond ordinance that was instituted in the county last year. The new system is based on square footage.

The fee was based on a study the Camden County commission conducted to determine the impact of development on roads within the lakewide planning and zoning district.

Presiding Commissioner Carolyn Loraine said the county believes this is a more equitable solution.

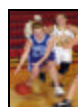
Although the commission did encounter opposition to the fee schedule, Loraine said it is a situation where the commission has to do what is in the best interest of the county. There isn't a solution that is going to satisfy everyone, she said.

The ordinance adopted last year required contractors, developers and/or home builders to put up a bond prior to construction to repair damage caused by increased traffic, dump trucks and heavy equipment.

Loraine said the road bond system had not been effective because it was difficult to determine the amount of damage and how to charge for it.

With the road study completed, the county commission decided the road impact fee was a better way of handling it.

Fees run from \$400 for low-density residential garages and additions with less than 1,000-square feet; to



\$750 per dwelling unit for medium- or high-density residential; and \$700 per 1,000-square feet for high-impact commercial.

The fees are non-refundable.

The change was brought about by difficulties and disagreements that have arisen between the developers and the county.

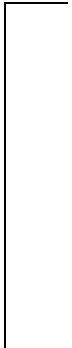
The fee structure will allow developers to build the cost into their projects while giving the single-family homebuilder a fair break, according to Loraine.

As development has increased, so has the wear and tear on hundreds of miles of blacktop roads, she said. Damage caused by the constant use of heavy trucks and equipment have cost the county tens of thousands of dollars in repairs and resurfacing.

It is an expense the county can't afford, Loraine said.

With about 300 miles of blacktop to maintain and hundreds of miles of gravel roads, the county's resources can't keep pace with the development, the commissioner said.

Joyce Miller is the assignment editor for the Lake Sun.



**Comments**

*Comments are limited to 200 words or less.*

**Name:**

**Comments:**

Current Word Count:

**Image Verification:**





---

Copyright © 2006 [GateHouse Media, Inc.](#) Some Rights Reserved.  
Westside Star DAILY :: 165 MISSOURI BLVD, Lauri, MO 65038  
Phone: (573) 374-3100 | Email: [westsidestar@charterinternet.com](mailto:westsidestar@charterinternet.com)

Original content available for non-commercial use  
under a [Creative Commons](#) license.



---

IYP and SEO vendors: [SEO by eLocalListing](#) | [Advertiser profiles](#) | [Yellow Pages by Premier Guide](#)